

WORLDWIDE LEADER IN OIL SHEAR TECHNOLOGY

INDUSTRIAL BRAKES & CLUTCHES

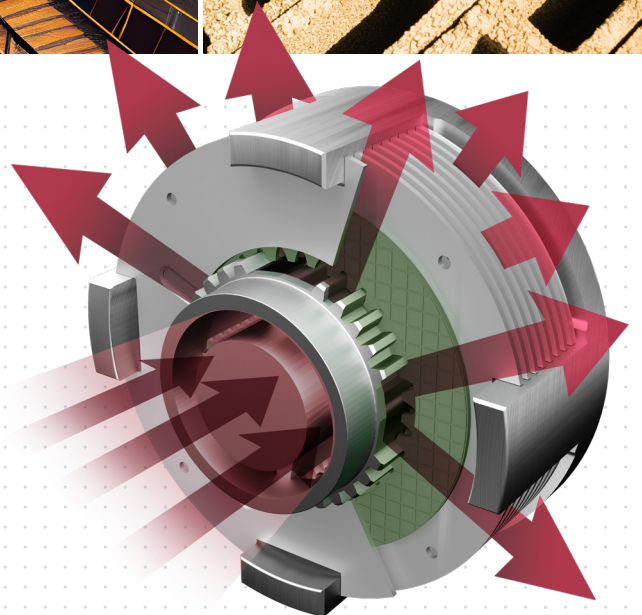


HIGH CYCLE—SEVERE DUTY CLUTCHES & BRAKES FOR YEARS OF MAINTENANCE FREE SERVICE



INNOVATIVE OIL SHEAR TECHNOLOGY INCREASES LIFE, REDUCES MAINTENANCE, ELIMINATES ADJUSTMENT, AND INCREASES PRODUCTION.

The Principle of Oil Shear Technology is to transmit torque through the phenomena of transmission fluid in shear between the multiple friction discs and drive plates. This significantly reduces wear of the friction material, and re-circulating the fluid removes the heat of engagement dissipating it through the housing or other outside components. This can increase service life up to 10 times that of conventional dry clutches or brakes allowing for higher loads, and increased cycle rates. The reduced maintenance and adjustment required increases production while reducing maintenance cost.



MADE IN AMERICA

Force Control Industries, Inc. | forcecontrol.com | 3660 Dixie Highway, Fairfield, OH 45014
Phone: 513-868-0900 | Email: info@forcecontrol.com

PRODUCTS FEATURING OIL SHEAR TECHNOLOGY



POSIDYNE® Clutch-Brakes

Designed for high cycle rate applications offering 5-10x longer service life & superior dynamic performance compared to dry-friction alternatives. These brakes have Pneumatic or Hydraulic Actuation Modes, with several logics available (i.e. Air-Set Clutch/Spring-Set Brake, Air-Set Clutch/Air-Set Brake, etc.) and a Torque Range of 50 – 80,000 lb-in. Flange, shaft, foot & piggyback mounting options are available with NEMA C-face: 56C – 256TC. Metric and custom mounting options are available upon request. Washdown, Marine and Hazardous duty options are also available.



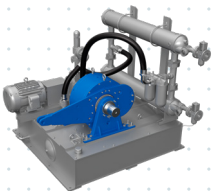
MAGNASHEAR® Electric Brakes

Electric holding brakes designed for tough application environments where open-face, dry-friction alternatives fall short. Electric Actuation Mode– 115 or 230VAC Input, with a Spring-Set/Electric-Release and a Torque Range of 6 – 1,250 lb-ft. Has flange mounting – Quick Mount with NEMA C-face: 56C – 449TC. Metric and custom mounting options are available upon request. Washdown, Marine and Hazardous duty options are also available.



POSISTOP® Motor, Coupler and Foot Mounted Brakes

Designed for both stopping and holding applications, offering increased lifecycle with little-to-no maintenance. Pneumatic or Hydraulic Actuation Modes with a Spring-Set/Pressure Release or Pressure-Set/Spring-Release and a Torque Range of 4 – 4,152 lb-ft. Flange, shaft and foot mounting options are available with NEMA C-face: 56C – 449TC. Metric and custom mounting available upon request as well as Washdown, Marine and Hazardous duty options.



POSITORQ® Dynamic Load Brakes

Used in tensioning and dynamometer applications offering high torque at low speeds, down to zero RPM, without chatter. Offered à la carte or with cooling/actuation systems, valves, load cells, controls, DAQ, etc. Pneumatic or Hydraulic Actuation Modes with a Spring-Set/Pressure Release or Pressure-Set/Spring-Release and a Torque Range of 72 – 200,000 lb-ft. Flange and foot mounting options are available.

OTHER PRODUCTS



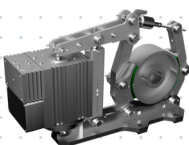
E-Stop Dry-Friction Brakes

Compact, Fail-Safe brakes offering high torque with low inertia for emergency braking events and holding applications. They have a Pneumatic Actuation Mode with a Spring-Set/Air-Release and a Torque Range of 260 – 26,058 lb-ft. Flange or shaft mounting options are available.



CLPC® Positioning Controllers

Closed Loop Position Control is used to improve positioning accuracy on Posidyne® clutch-brakes and Posistop® brakes beyond what can be achieved with only a limit switch, or PLC control system. Its Universal Supply Input is Single Phase, 85-264VAC, 47-63Hz. The controllers have an Index Count up to 65,535 pulses, and NEMA 1 or NEMA 4x anodized aluminum enclosure options.



HYDRASTOP® Thruster Brakes

Designed to AIST Technical Report 11 – Used as holding or stopping brakes on AC applications such as cranes, conveyors or movable bridges. Electric Actuation Mode– 3PH-60HZ-230/460VAC, with a Spring-Set (internal or external spring)/Electric-Release, and a Torque Range of 45 – 9,000 lb-ft. The brakes are Foot-mounted, fitting 8 – 30” brake wheels.