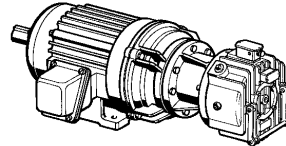


MagnaShear Motor Brakes (Large Series)

Sizes MSB9, MSB10 and MSB12

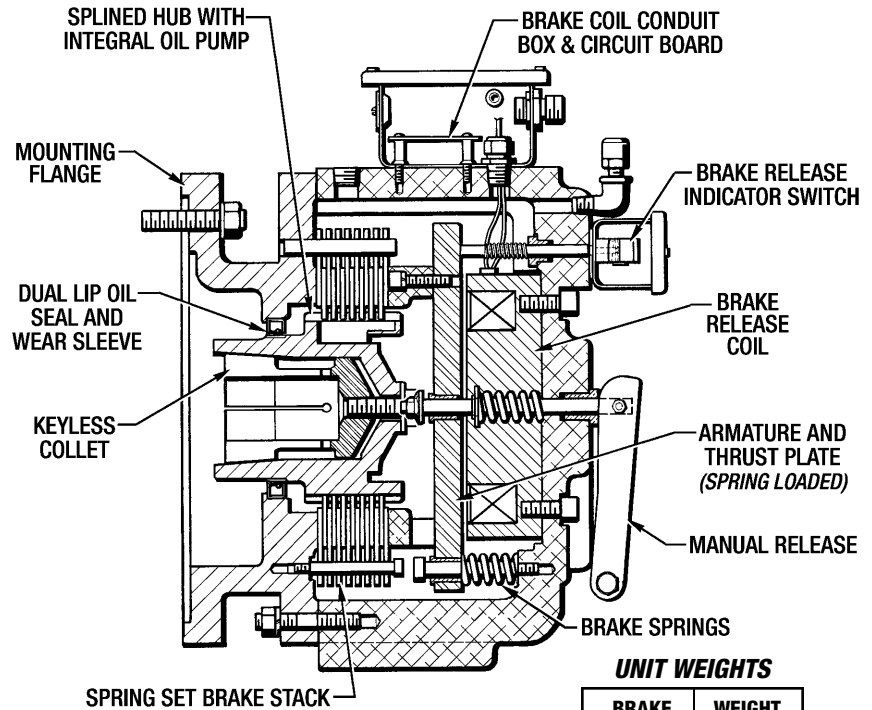
These are the larger versions of the proven *MagnaShear* Motor Brakes. These brakes are designed for the rigorous demands of dynamically stopping and holding heavy loads. These units are ideal for a wide variety of heavy-duty and high torque applications such as elevator lifts, transfer conveyors and other start/stop devices.



The Large *MagnaShear* Motor Brake is also available as an **Assembled Brake Motor (ABM)** in a wide variety of sizes.

Features:

- Oil Shear design to provide maximum service life.
- Multiple discs to minimize inertia.
- Totally enclosed from outside contaminants.
- 1250 Ft.Lbs. maximum torque, 3 sizes of brakes.
- Collet shaft to hub connection to eliminate key problems.
- NEMA standard C-face mounting.
- Spring set brake, 115 & 230 VAC electric release.
- Pulse width modulation (PWM) control to minimize heat buildup.
- Single handle manual release.
- Brake released indicator switch.
- Over temperature switch (optional).



UNIT WEIGHTS

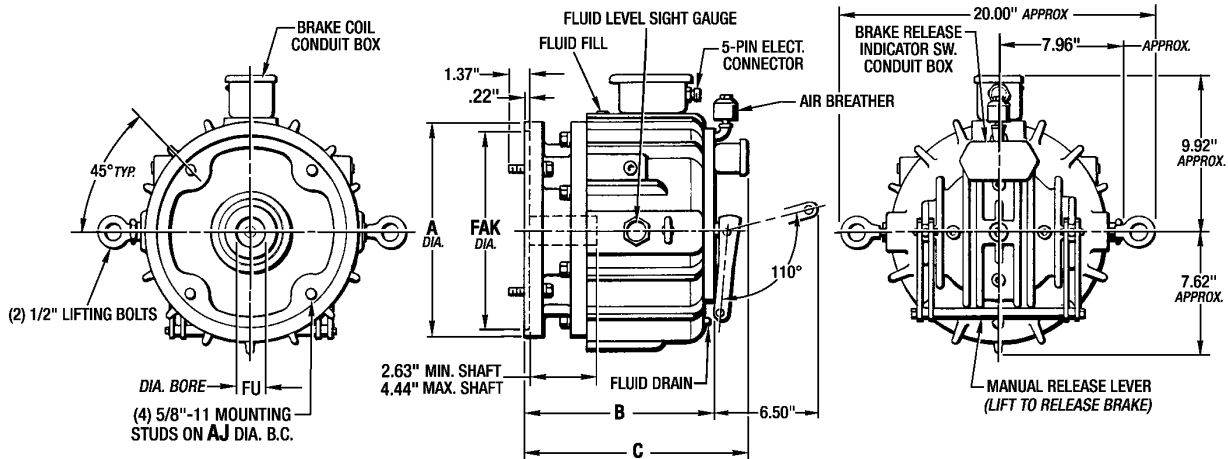
BRAKE SIZE	WEIGHT (Lbs.)
MSB9	250
MSB10	270
MSB12	600

Technical Specifications

BRAKE SIZE	AVAILABLE PILOT DIA. (Inches)	MIN. COLLET BORE (Inches)	MAX. COLLET BORE (Inches)	No. OF SPRINGS	STATIC TORQUE (Lb. Ft.)	DYNAMIC TORQUE (Lb. Ft.)	MAX KE per ENGMT. (Ft. Lbs.)	INERTIA (Lb. Ft.2)	OIL CAP. (Qts.)	INPUT VOLTAGE (VAC)	INRUSH CURRENT (Amps)	HOLDING CURRENT (Amps)	IN RUSH TIME (Sec)	COIL RESISTANCE @ 20° C (Ohms)
MSB9	10.500 ----- 12.500	1.625	2.375	4	325	280	48,000	0.962	6	115 ----- 230	6	1.8	0.44	21.5
		1.875		6	488	420					3	.9		86
		2.375		8	650	559								
MSB10	10.500 ----- 12.500	2.125	2.375	4	450	387	69,000	1.244	6	115 ----- 230	6	1.8	0.44	21.5
		2.125		6	675	581					3	.9		86
		2.375		8	900	774								
MSB12	16.000	2.125	3.625	4	625	538	158,000	2.068	6	115 ----- 230	8	2.5	1.40	15
		2.375		6	938	807					4	1.3		60
		2.375		8	1250	1075								

Dimensional Specifications

MSB9 and MSB10 MagnaShear Brake Dimensions (Inches)

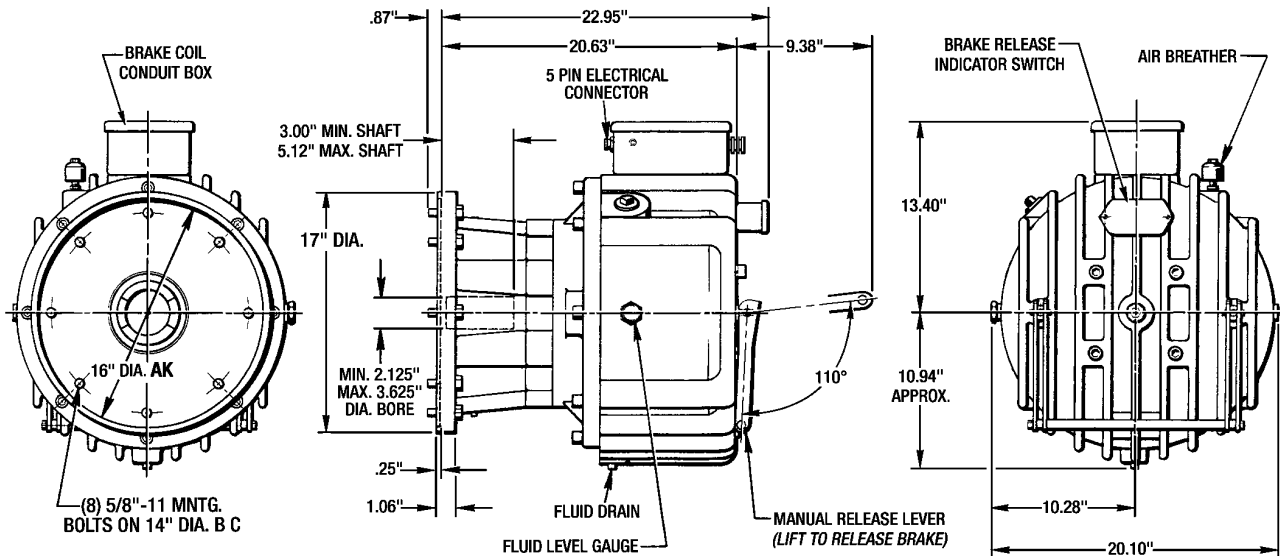


BRAKE SIZE	AVAILABLE FU	FAK	AJ	A	B	C
MSB9	1-7/8	10.500	9.000	11.75	12.06	14.32
	2-1/8	12.500	11.000	13.75		
	2-3/8					
MSB10	1-7/8	10.500	9.000	11.75	12.91	15.17
	2-1/8	12.500	11.000	13.75		
	2-3/8					

STANDARD MOTOR REGISTER TOLERANCES
 10-1/2" AK (+.000" -.003")
 12-1/2" AK (+.000" -.005")
 16" AK (+.000" -.005")

STANDARD MOTOR SHAFT DIAMETER TOLERANCES
 (+.000" -.001")

MSB12 MagnaShear Brake Dimensions (Inches)



Dimensions are subject to change without notice. Certified Installation Drawings are available upon request.



FORCE CONTROL INDUSTRIES, INC.

3660 Dixie Highway
 Fairfield, Ohio 45014

P.O. Box 18366
 Fairfield, Ohio 45018

Telephone: 513-868-0900
 Fax: 513-868-2105

E-Mail: info@forcecontrol.com
 Web: www.forcecontrol.com

