



## Posistop X Class Specifications

The Posistop Motor Brakes (MB Series) with multiple springs and multiple discs are very flexible brakes. They may be assembled to obtain a broad range of torque ratings. The spring set torque of the brake is determined by the number of springs and number of discs assembled. The following charts show all of the options however the ones in bold type are considered standard. Typically selecting the maximum number of discs and fewer springs to achieve the desired torque is ideal.

### XB1 and XB2 Specifications

#### XB1 Torque Options

STATIC TORQUE (Dynamic Torque) (Lb. Ins.)				
2 Friction Discs	No. Springs			2 Drive Plates
	3	6	9	
	4 (3)	8 (7)	12 (10)	
	15	30	46	
Pressure to Release (PSI)				

Size	Thermal Rating (Hp Sec/)	Max. KE per Engagement (Ft. Lbs)	Piston Volume (Cu In)	Inertia WK2 (Lb. Ft.^2)	Max. Speed (RPM)	Weight (Lbs.)	Oil Capacity (Ounces)
XB1	30	4650	.9	.0130	1800	31	28
XB2	39	11,295					

#### XB2 Torque Options

STATIC TORQUE (Dynamic Torque) (Lb. Ins.)				
3 Friction Discs	No. Springs			3 Drive Plates
	3	6	9	
	6 (5)	12 (10)	18 (15)	
	15	30	46	
Pressure to Release (PSI)				

### XB3 Specifications

STATIC TORQUE (Dynamic Torque) (Lb. Ins.)						
Friction Discs	No. Springs				Drive Plates	
	3	7(6)	15 (13)	23 (18)		6
	4	10 (9)	20 (17)	30 (26)		8
	5	12 (10)	25 (22)	38 (30)		6
		15	30	46		
Pressure to Release (PSI)						

Size	Thermal Rating (Hp Sec/)	Max. KE per Engagement (Ft. Lbs)	Piston Volume (Cu In)	Inertia WK2 (Lb. Ft.^2)	Max. Speed (RPM)	Weight (Lbs.)	Oil Capacity (Ounces)
XB3	42	1712	.9	.0174	1800	45	30
				.0181			
				.0189			

### XB4 Specifications

STATIC TORQUE (Dynamic Torque) (Lb. Ins.)					
Friction Discs	No. Springs			Drive Plates	
		12(10)	17 (15)		24 (21)
		25 (20)	36 (31)		37 (30)
		50 (43)	54 (46)		75 (65)
Pressure to Release (PSI)					

Size	Thermal Rating (Hp Sec/)	Max. KE per Engagement (Ft. Lbs)	Piston Volume (Cu In)	Inertia WK2 (Lb. Ft.^2)	Max. Speed (RPM)	Weight (Lbs.)	Oil Capacity (Ounces)
XB4	cf	cf	2.66	.0473	1800	75	60
				.0499			
				.0526			

Cf=Consult Factory



## XB5 & XB6 Specifications

STATIC TORQUE (Dynamic Torque) (Lb. Ins.)				
Friction Discs	No. Springs			Drive Plates
	50 (43)	65 (56)	80 (69)	
	100 (86)	130 (112)	150 (120)	
	160 (138)	185 (159)	200 (172)	
240* (206)	300** (258)			
Pressure to Release (PSI)				

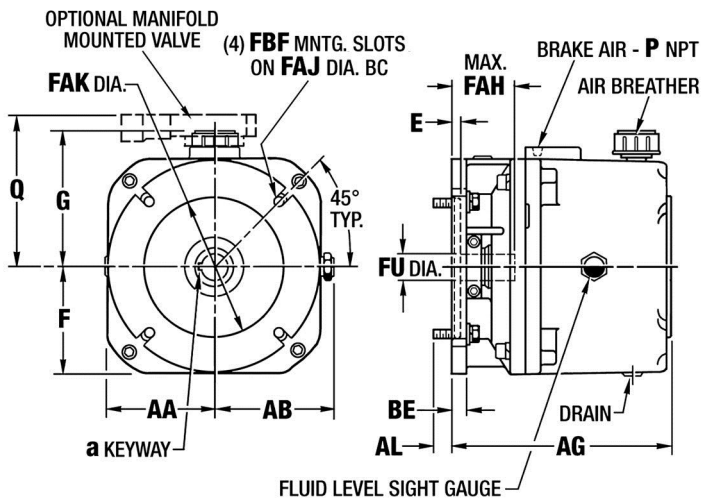
Size	Thermal Rating (Hp Sec/Min)	Max. KE per Engagement (Ft. Lbs)	Piston Volume (Cu In)	Inertia WK2 (Lb. Ft.^2)	Max. Speed (RPM)	Weight (Lbs.)	Oil Capacity (Ounces)
XB6	cf	cf	19.5	.2011	1800	141	42
				.2215			

Cf=Consult Factory

\* = 1 3/8" Minimum Shaft Diameter

\*\* = 1 5/8" Minimum Shaft Diameter

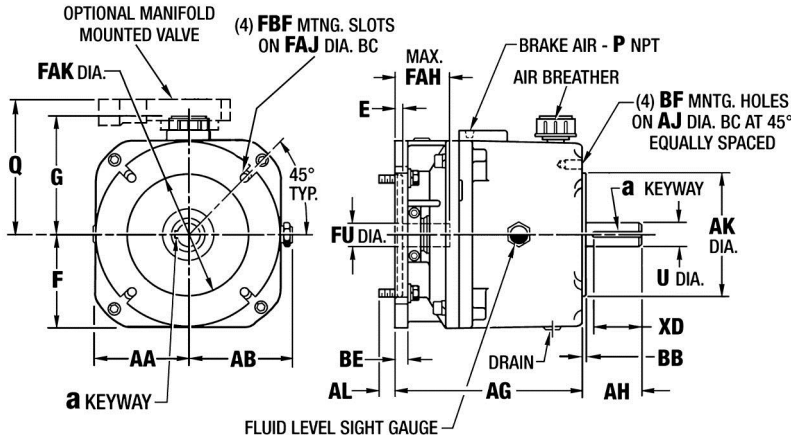
## Posistop XB Motor Brake Dimensions (Inches)



Brake Size	Brake Overall Dimensions (inches)															
	AA	AB	AG	AL	BE	E	F	G	FAH	FAK	FU	a	FBF	FAJ	P	Q
XB1	3.51	3.77	7.00	0.63	0.50	0.28	3.44	4.50	2.38	4.5	5/8	3/16 x 3/32	7/16	5.875	1/8 NPT	4.94
XB2	3.51	3.77	7.00	0.63	0.56	0.28	3.44	4.50	2.38	4.5	7/8	3/16 x 3/32	7/16	5.875	1/8 NPT	4.94
XB3	4.44	4.44	8.46	0.57	0.69	0.19	4.44	5.08	2.94	8.5	7/8 1 1/8	1/4 x 1/8	9/16	7.250	1/8 NPT	4.94
XB4	4.50	5.00	CF	0.71	0.83	0.19	4.50	5.67	3.13	8.5	6.00	5/16 X 5/32	9/16	7.250	1/8 NPT	
XB5	5.00	5.00	11.70	0.71	0.69	N/A	5.50	6.64	3.88	C/F	1 1/8"	1/4 x 1/8	9/16	7.250	1/4 NPT	C/F
											1 3/8"	5/16 X 5/32				
											1 5/8"	3/8 X 3/16				
XB6	5.50	5.50	11.70	0.71	0.69	N/A	5.50	6.64	4.88	C/F	1 5/8"	3/8 X 3/16	9/16	9.000	1/4 NPT	C/F
											1 7/8"	1/2 X 1/4				



## Posistop XB Coupler Brake Dimensions (Inches)



Brake Size	Coupler Brake Overall Dimensions (inches)						
	AA	AB	AG	F	G	P	Q
XB1	3.51	3.77	7.00	3.44	4.50	1/8 npt	4.94
XB2							
XB3	4.44	4.44	8.46	4.44	5.08		
XB4	4.50	5.00	CF	4.50	5.67	1/4 NPT	6.00
XB5	5.00	5.00	###	5.50	6.64		CF
XB6	5.50	5.50					

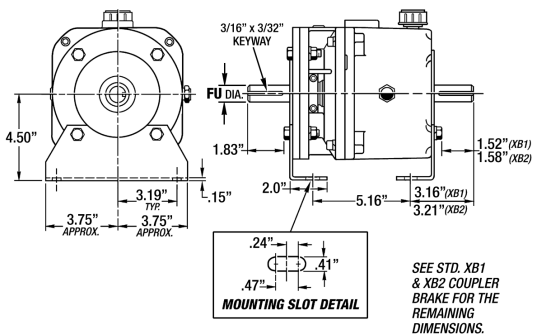
Brake Size	Coupler Brake Input Dimensions (inches)							
	AL	BE	E	FAH	FAJ	FAK	FU	FBF
XB1	0.63	0.50	0.28	2.38	5.88	4.500	5/8	7/16
XB2	0.63	0.50	0.28	2.38	5.88	4.500	7/8	7/16
XB3	0.57	0.73	0.19	2.94	7.25	8.500	7/8 1 1/8	9/16
XB4	0.75	0.83	0.19	3.13	7.25	8.500	1 1/8 1 3/8	9/16
XB5	0.71	0.69	N/A	2.88 3.88	7.25	N/A	1 1/8	17/32
1 3/8								
1 5/8								
XB6	0.71	0.69	N/A	4.88 .4.72	9.00	N/A	1 5/8	17/32
1 7/8								

Brake Size	Coupler Brake Output Dimensions (inches)							
	a	AH	AJ	AK	BB	BF	U	XD
XB1	3/16 x 3/32	2.06	5.88	4.50	0.16	3/8-16	5/8	1.50
XB2		2.12		4.50	0.16	3/8-16	7/8	1.73
XB3	1/4 X 1/8	2.63	7.25	8.50	0.25	1/2-13	1 1/8	2.00
XB4	5/16 X 5/32	3.13	7.25	8.50	0.25	1/2-13	1 3/8	2.65
XB5	1/4 X 1/8	2.75	7.25	8.50	0.25	1/2-13	1 1/8	2.65
	5/16 x 5/32	3.37					1 3/8	3.00
	3/8 x 3/16	4.00					1 5/8	3.63
XB6	3/8 x 3/16	4.63	9.00	10.50	0.25	1/2-13	1 5/8	3.69
	1/2 x 1/4	4.38					1 7/8	3.62

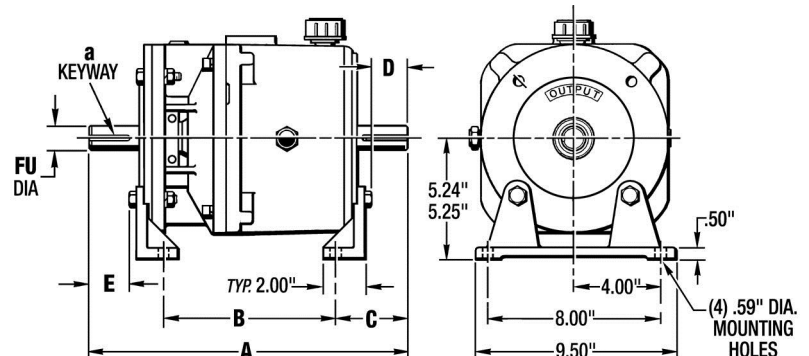
## Posistop XB1, XB2 & XB3 Coupler Brake Dimensions (Inches)

(with mounting feet and male input shaft)

Size XB1 & XB2



Size XB3



Size	XB1	XB2
FU Dia.	.625"	0.875

Size	FU	a	A	B	C	D	E
X3	1.250	1/4" X 1/8"	14.460	6.950	3.630	1.820	2.070



# How To Order X Class Posistop Coupler or Motor Brake



**(1) Size**

1	=XB1
2	=XB2
3	=XB3
4	=XB4
5	=XB5
6	=XB6

**(3)  
Spring  
Set Brake**

**(9 Mounting Options**

<b>H*</b>	= Horizontal ( <i>No Options</i> )
<b>N**</b>	=Horizontal/Vertical
<b>D</b>	= Vertical, Input Down
<b>U</b>	= Vertical, Input Up

\* "H" = horizontal mounting only. No extra oil is included

\*\* "N" = horizontal or vertical mounting by changing sight gauge and breather location. 1 qt. extra oil included.

**(2) Input Module**

2	= 4 1/2 FAK, 5/8" FU	56C	XB1 & XB2
3	= 4 1/2 FAK, 7/8" FU	143TC 145TC	
4	= 8 1/2 AK, 1 1/8 FU	182TC 184TC	XB3
5	= 8 1/2 AK, 1 3/8 FU	213TC 215TC	XB4
6	= 8 1/2 AK, 1 5/8" FU	254TC 256TC	XB5
7	= 10 1/2 AK, 1 5/8 FU	284C 286C	XB6
8	= 10 1/2 AK, 1 7/8 FU	284TC 286TC	XB6

**(5,6 & 7) Torque (Lb. Ft.)**

<b>004</b>	=4
<b>006</b>	=6
<b>007</b>	=7
<b>010</b>	=10
<b>012</b>	=12
<b>015</b>	=15
<b>018</b>	=18
<b>020</b>	=20
<b>025</b>	=25
<b>030</b>	=30
<b>038</b>	=38
<b>050</b>	=50
<b>065</b>	=65
<b>080</b>	=80
<b>100</b>	=100
<b>130</b>	=130
<b>150</b>	=150
<b>160</b>	=160
<b>185</b>	=185
<b>200</b>	=200
<b>240*</b>	=240
<b>300*</b>	=300

\*Note:  
Torque available only with 1 5/8" or 1 7/8" shaft.

**(8) Package Type**

<b>S</b>	= Standard
<b>F</b>	= Food Grade Fluid, (USDA H-2)
<b>W</b>	= Washdown, nickel plated shafts, SS hardware, Steel-It Epoxy paint, food grade fluid (USDA H-2)
<b>E</b>	= Washdown, nickel plated shafts, SS hardware, White Epoxy paint, food grade fluid (USDA H-2)

**(2) Output Module**

<b>0</b>	Motor Brake		
2	= 4 1/2 FAK, 5/8" FU	56C	XB1 & XB2
3	= 4 1/2 FAK, 7/8" FU	143TC 145TC	
4	= 8 1/2 AK, 1 1/8 FU	182TC 184TC	XB3
5	= 8 1/2 AK, 1 3/8 FU	213TC 215TC	XB4
6	= 8 1/2 AK, 1 5/8" FU	254TC 256TC	XB5
7	= 10 1/2 AK, 1 5/8 FU	284C 286C	XB6
8	= 10 1/2 AK, 1 7/8 FU	284TC 286TC	XB6

NOTE:  
Accessories and Kits must be ordered separately.