

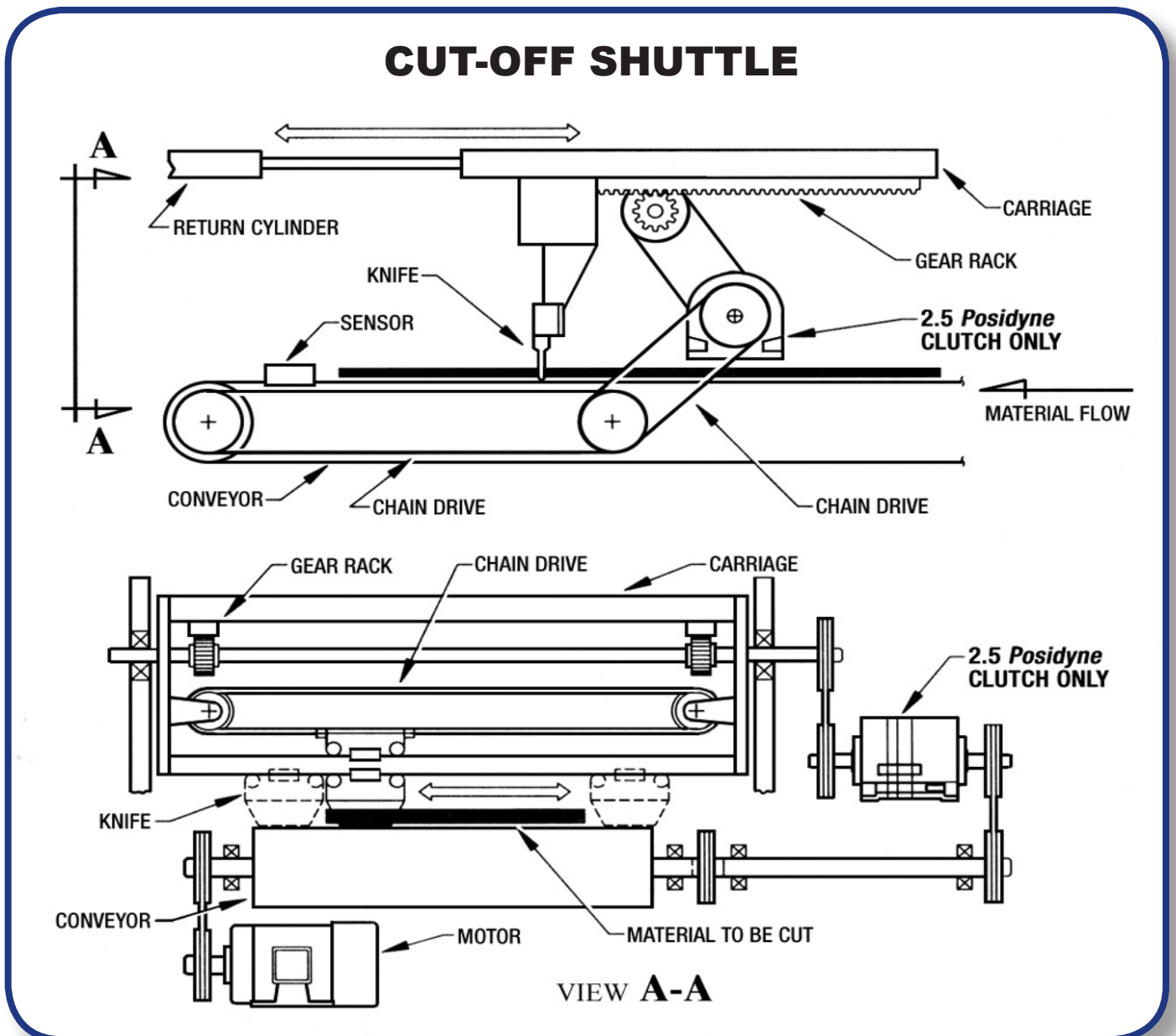
APPLICATION BULLETIN



APPLICATION: Cut-Off Shuttle

INDUSTRY: Construction Material Mfg., Extruders

PRODUCT: Oil Shear *Posidyne* Clutch Only



CUT-OFF SHUTTLE

WHERE THEY ARE USED: Where a continuous sheet of product or material must be cut into fixed lengths or sheets without stopping. This can be any type of layered up material such as roofing, gypsum board, wallboard or extruded items such as pipe, plastic extrusions, etc.

HOW THEY WORK: The continuous flow of product comes out of the forming machine onto a conveyor belt. A position sensor placed at the proper length, senses the end of the product and activates the cut-off system. A **Posidyne**, driven by the conveyor, is engaged to accelerate the cut-off shuttle up to exactly the same speed as the line. The cut-off knife then cuts across the product while at line speed. The **Posidyne** is released and the shuttle is returned by means of an air cylinder.

PROBLEMS SOLVED: The **Posidyne** serves as a reliable and durable method of engaging the cut-off shuttle to the conveyor drive. The high dynamic torque accelerates the shuttle quickly allowing more time for the cut-off knife, while maintaining a small package which will fit under the conveyor. The smooth acceleration reduces wear and tear on the drive system and the multiple disc oil shear technology contributes to extremely long service life with little maintenance.

IMPORTANT FEATURES:

- Totally enclosed design eliminates contamination from water, dirt, dust, etc.
- Oil shear technology for low maintenance and increased service life.
- Advanced friction material for quick smooth acceleration in a small package.
- Controlled acceleration by adjusting the actuation air pressure.



FORCE CONTROL INDUSTRIES, INC.

3660 Dixie Highway Fairfield, Ohio 45014
Phone: 513-868-0900 Fax: 513-868-2105
E-Mail: info@forcecontrol.com Web: www.forcecontrol.com